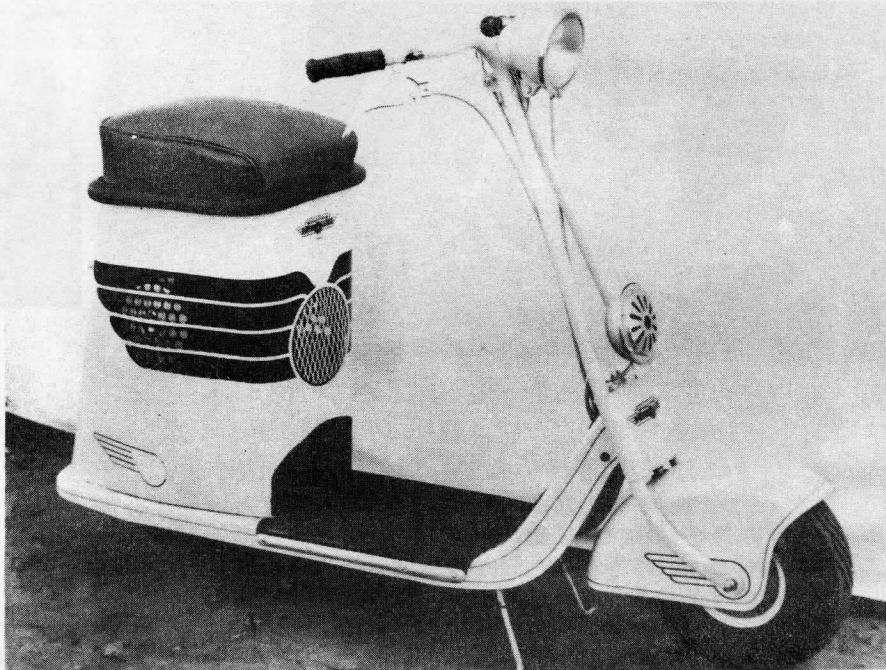




TRADE MARK REGISTERED

1938 - MOTOR GLIDE
WITH AUTOMATIC (SELF-SHIFTING) TRANSMISSION



AMAZING SPEED CHANGES WITHOUT EFFORT

- 1 **AUTOMATIC TRANSMISSION:** Shifts speeds *automatically*—no pedal or gear lever to work. Transmission ratio automatically varies from 14:1 in low to 4:1 in high according to road speed. The steeper the hill, the more power you get.
- 2 **AUTOMATIC CLUTCH:** Permits engine to idle when *Motor Glide* is standing. As throttle is opened, clutch automatically engages and you smoothly glide away.
- 3 **AUTOMATIC STARTING:** Engine starts easily with just a *push* of the Motor Glide—*No kicking or cranking!*
- 4 **BIGGER, SAFER BRAKE:** Positive safe-action, self-energizing type. Stops in 25 feet at 25 miles per hour.

MOTOR GLIDE MANUFACTURED UNDER U.S. PATENT
NO. 2,111,691. OTHER PATENTS PENDING.

MODEL "50" - 5/8 H.P. Engine - Automatic Clutch - Price \$125

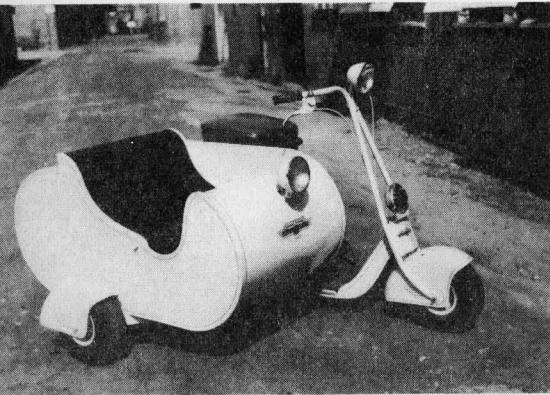
MODEL "60" - One H.P. Engine - Automatic Clutch - Price \$135

SELF-SHIFTING TRANSMISSION - Price \$15

ALL PRICES F.O.B. INGLEWOOD
(Uncrated)

A PRODUCT OF
SALS'BURY CORPORATION
INGLEWOOD, CALIFORNIA

MOTOR GLIDES FOR EVERY PURPOSE



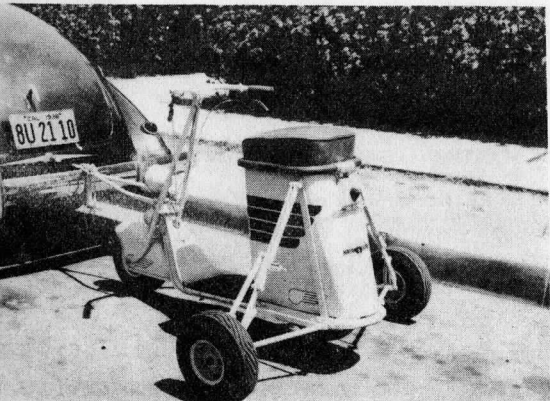
PASSENGER SIDE CAR

MODEL NO. SC-11

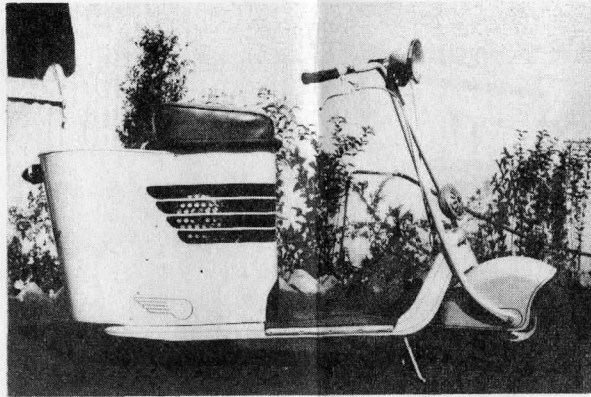
For two children - One adult

Package space in back of Spring Seat

Price \$35.00 - Headlight \$3.50



CYCLE TOW UNIT



PARCEL CARRIER

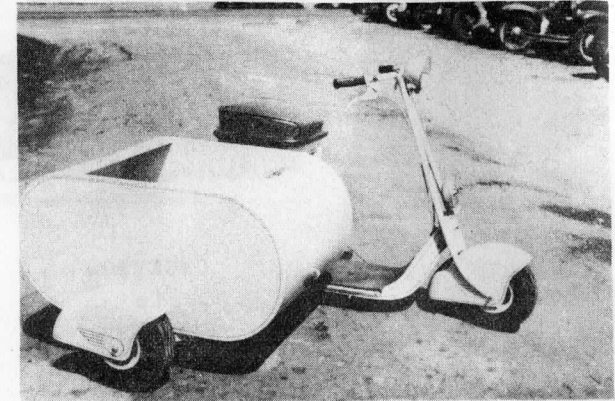
MODEL NO. PC-1

Ideal for Small Packages

Price \$5.00 - Attached \$6.00



WINDSHIELD



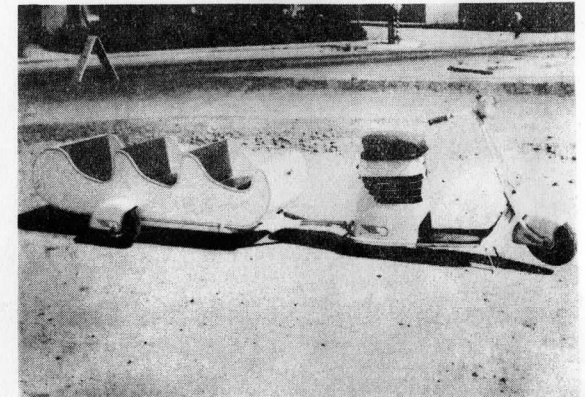
EXPRESS SIDE CAR

MODEL NO. SC-12

A Most Economical Delivery Unit

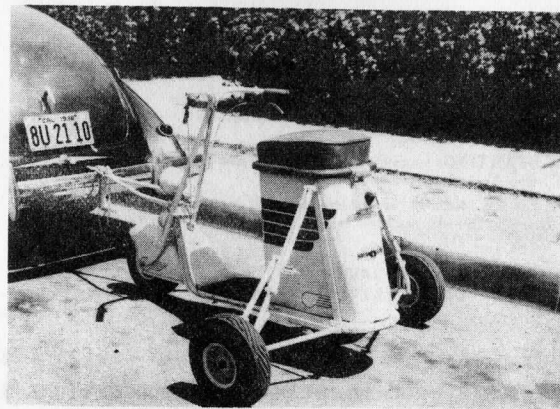
Carrying Capacity - 200 pounds

Price \$29.50



TRAILER

MODEL NO. T-2



CYCLE TOW UNIT

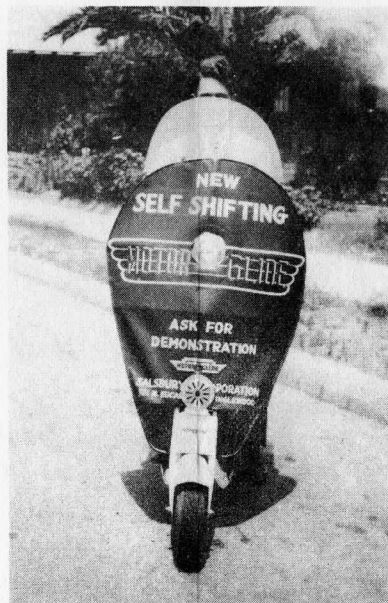
MODEL NO. CT-60

For Automobile Pick-up and Delivery

Sold only as a complete Unit

With Model 60 Motor Glide

Price \$195.00



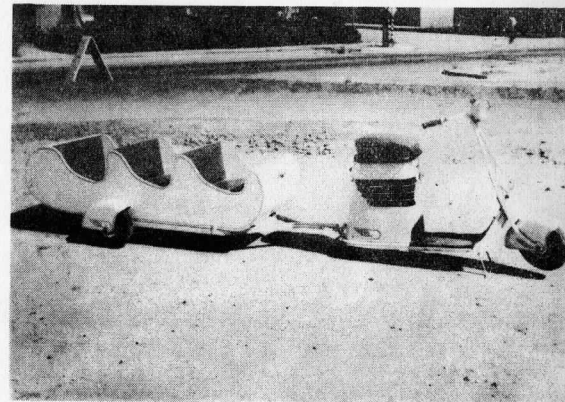
WINDSHIELD

MODEL NO. W-100

Ideal for Cold or Wet Weather

Price \$1.00 - With flexible

Glass \$2.00 additional



TRAILER

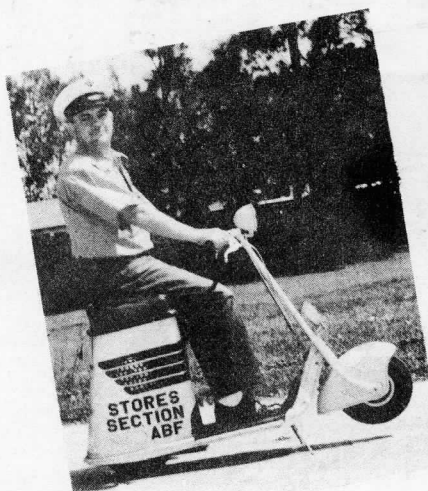
MODEL NO. T-2

Designed for Rental Service

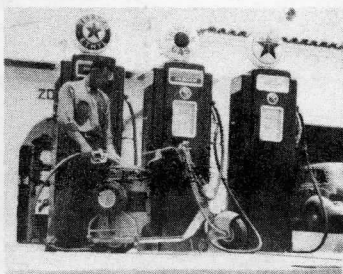
Will carry 6 small children

Price \$65.00

MOTOR GLIDE EXACTLY FILLS A NEED NOT SERVED BY A BICYCLE,
MOTOR CYCLE OR AUTOMOBILE



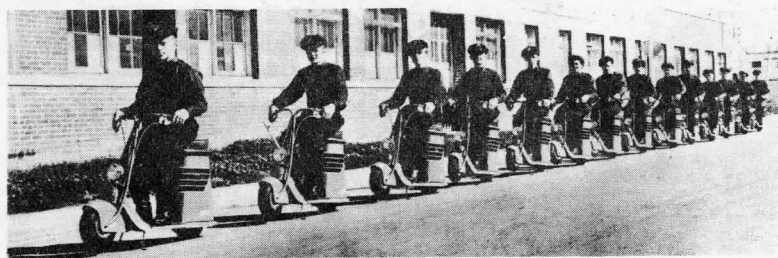
NAVAL AIR SERVICE



CYCLETOW
in
SERVICE
STATION
USE



TYPICAL DEALERSHIP



MESSENGER
SERVICE



POSTMAN



BUSINESS

