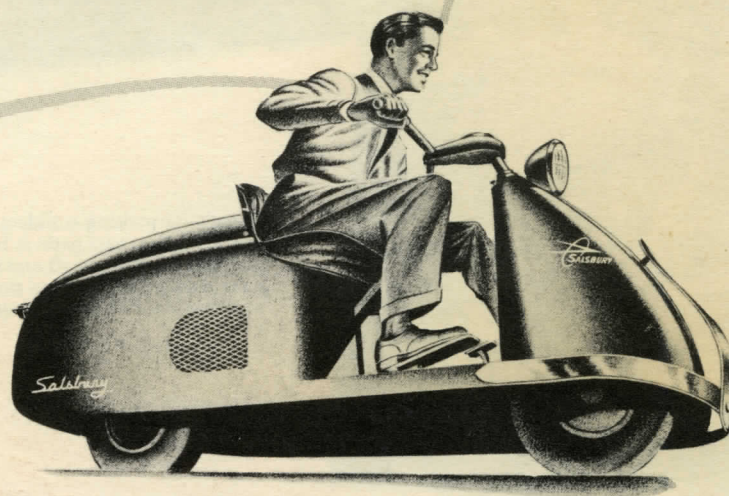


 **SALSBU**RY... BEAUTIFUL... SAFE... ECONOMICAL



THE REVOLUTIONARY
***SALSBU*RY**
SUPER-SCOOTER

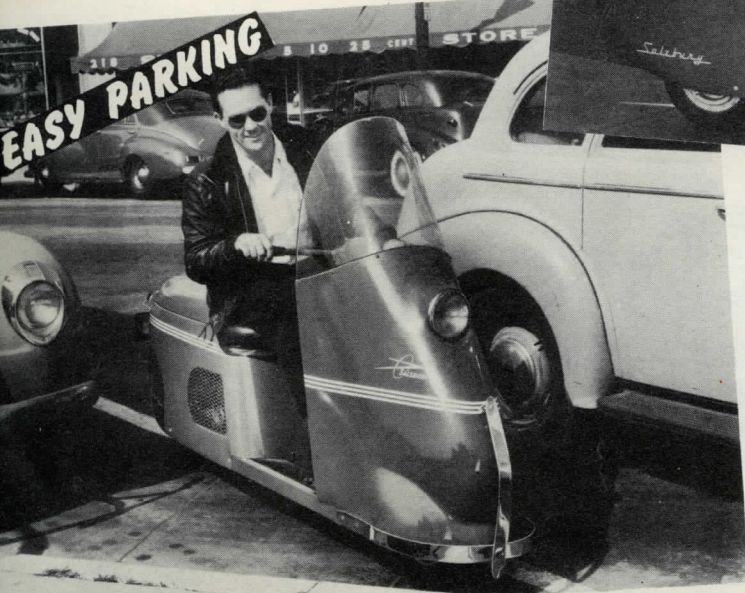
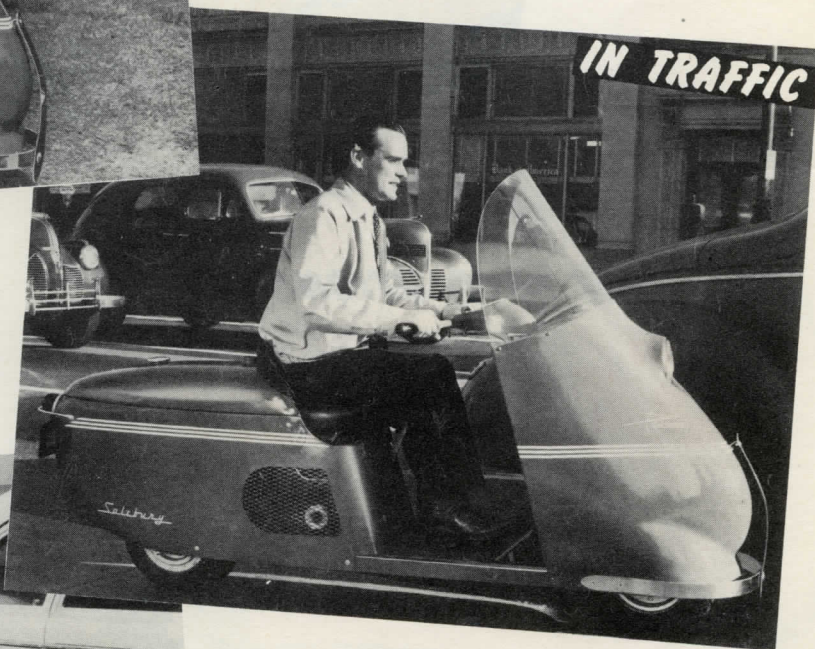


BRILLIANT, NEW PERFORMANCE AND S



- 1 You can't beat the Salsbury for to-and-from-work transportation. Costs less than carfare because you get 65 miles to the gallon! Average cost of operation is less than $\frac{1}{3}$ ¢ per mile for gas and oil.

- 2 In traffic, the Salsbury is a whiz. Its size, maneuverability and pickup put you out in front at the lights, get you there faster than by car.



- 3 There's no parking problem with a Salsbury. You can park it between cars and in other small areas where a car won't go. You can put it almost anywhere where you would park a bicycle.

STYLE IN LOW-COST TRANSPORTATION

- 4 The Salsbury has a handy, large package compartment... ample for most shopping trips. Park it by your steps and you can be halfway to the corner store in the time it would ordinarily take to get your car out.



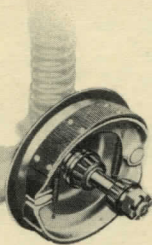
- 6 Anyone who can ride a bicycle can learn to drive a Salsbury in 10 minutes. There's no clutch lever, no gear shift... *Stop* and *Go* pedals are the only controls.



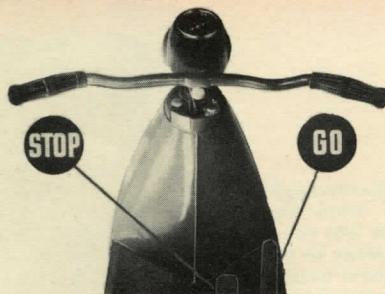
- 5 The Salsbury is ideal for to-and-from school use. It's safe, dependable and so economical that young people can pay the full cost of operation, usually about 50¢ a week, out of their allowances.



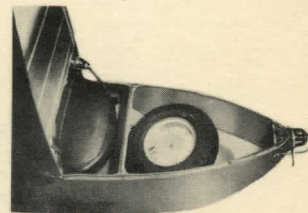
MOST COMPLETELY AUTOMATIC VEHICLE EVER BUILT!



SAFEST—Big internal expanding brake, easy maneuverability, fast pickup, low center of gravity, perfect balance — make it safest vehicle of its kind.



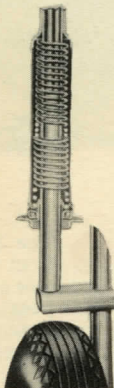
EASIEST TO DRIVE — *Stop* and *Go* pedals are only controls. Automatic transmission and clutch eliminate clutch pedal and gear shift.



BIGGEST PACKAGE COMPARTMENT — Capacity, one and a half cubic feet. Will carry spare with room left over for groceries.

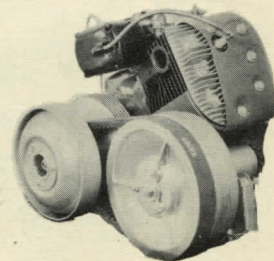


MOST COMFORTABLE — Aircraft-type wheel suspension, spring-cushioned seat and rubber-mounted engine give smooth, shock-proof ride.

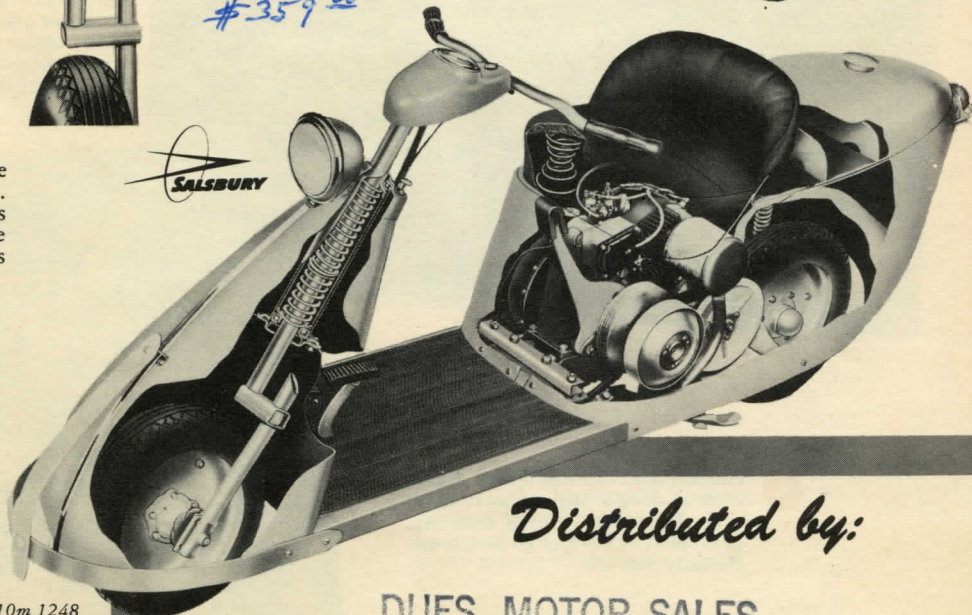
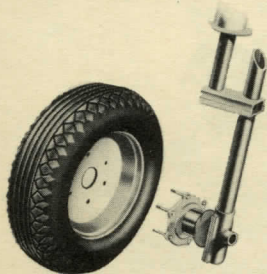


MOST POWERFUL — 6 horsepower Salsbury engine... simple, rugged and efficient. Climbs steep hills at car speed.

310 c.c. (19 cu. in.)
\$359⁰⁰



EASIEST TO SERVICE — Easy tire change exclusive with Salsbury. Just remove nuts and lift wheels off axles. Spare fits in package compartment. All moving parts easily accessible.



Distributed by:

DUES MOTOR SALES
WARREN ST. AT APPLE
DAYTON, OHIO

Printed in U.S.A. Bulletin SC 1-10m 1248

SALSBUURY MOTORS DIVISION
WAYNE MANUFACTURING CO.
POMONA, CALIFORNIA